

Flexible round inserts **VK** or rectangular **VP** The cross-sections are designed to prevent the transmission of vibration loads from the fan to the duct system.

Technical characteristics of flexible inserts:

***VK**- flexible insert with round cross-section, operating temperature up to 80°C; Used for fans of the series **VR-80-70, VR-280-46, VO**;

***VP**- flexible rectangular cross-section insert, operating temperature up to 80°C; Used for fans of the series **VR-80-70, VR-280-46**;

***VKO**- flexible fire-resistant insert of round cross-section, operating temperature up to 600°C; Used for smoke exhaust fans of the series **VR-80-70-DU**;

***VPO**- flexible fire-resistant insert of rectangular cross-section, operating temperature up to 600°C; Used for smoke exhaust fans of the series **VR-80-70-DU**;

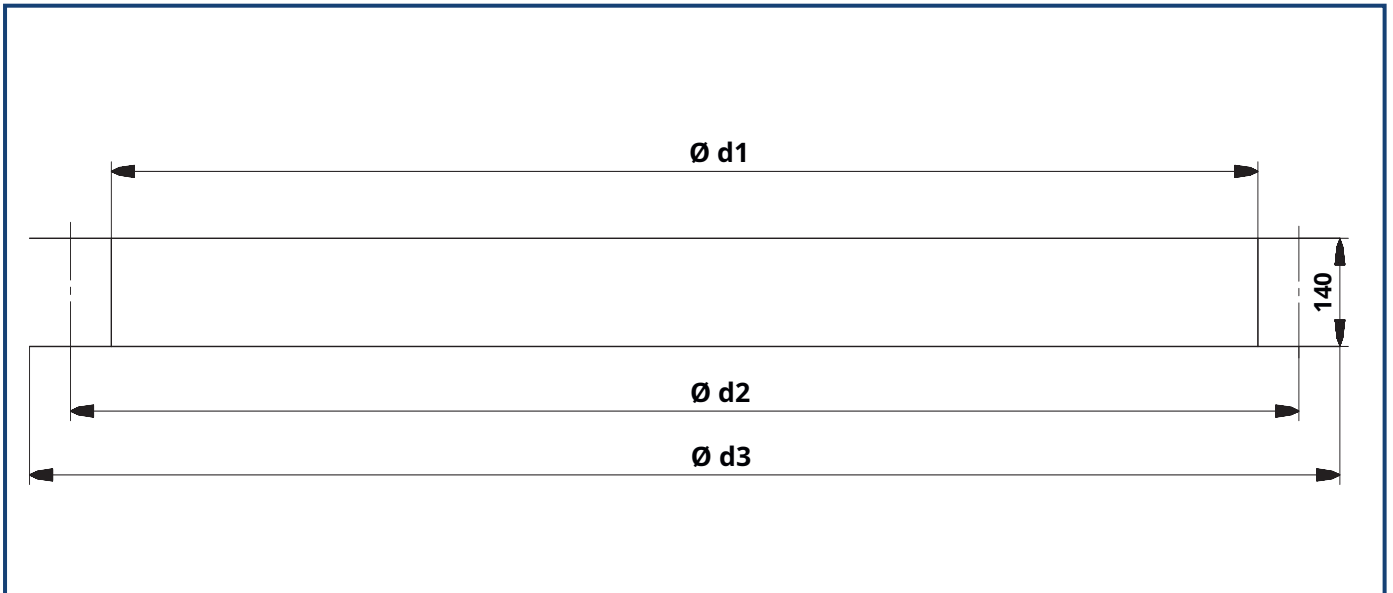
Order example

Flexible fire-resistant round insert for smoke exhaust fan VR-80-70-DU-600-6.3, diameter 630mm.

VKO - 630 - O

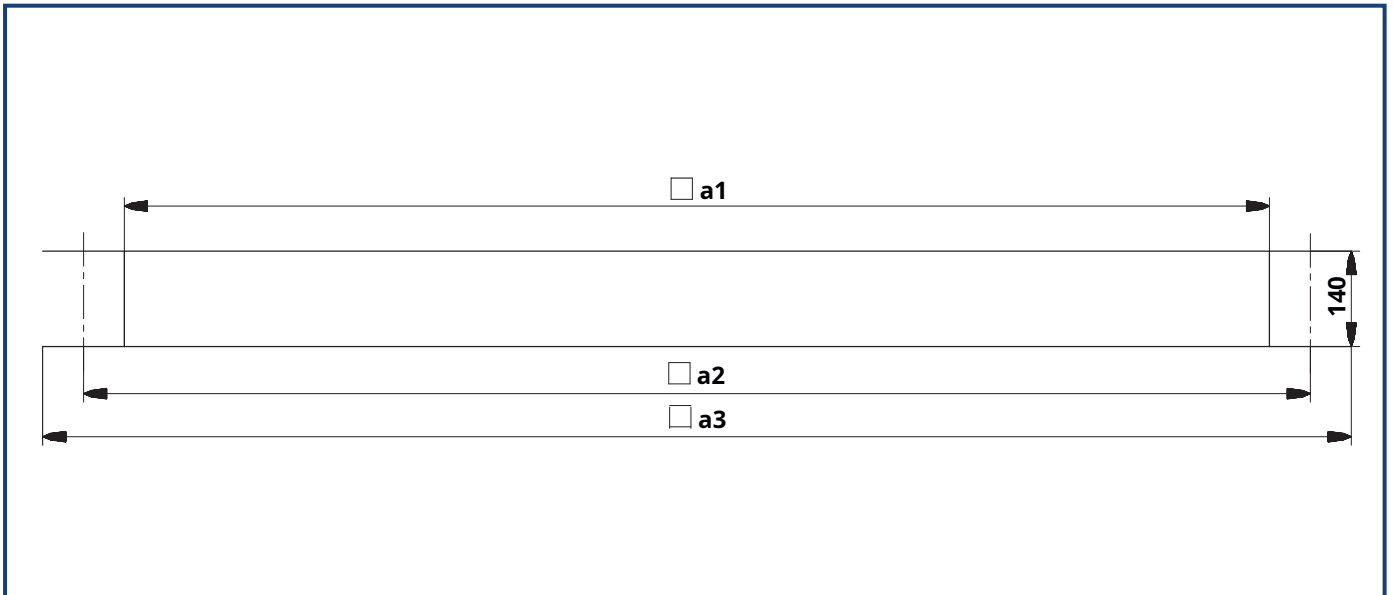
Flexible insert series: VC; VP; VKO; IDPs ;		
Fan size x100: 250; 315; 355; 400; 450; 500; 560; 630; 710; 800; 900; 1000; 1120; 1250 ;		
Implementation: O - general industrial/smoke extraction; K - corrosion-resistant;		

Overall and connecting dimensions of flexible round inserts

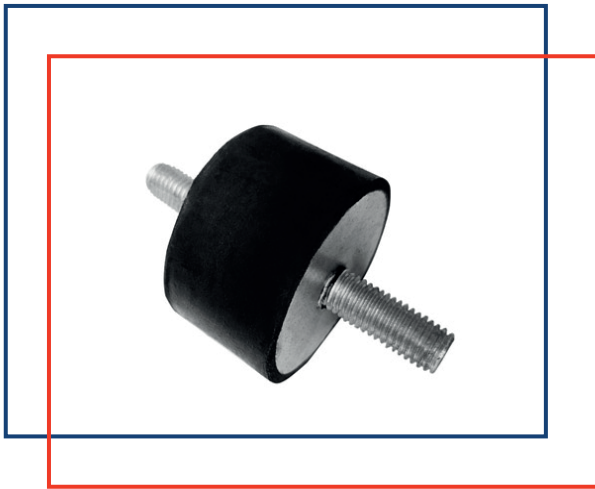


Standard size fan	d1, mm	d2, mm	d3/n	Insert weight, max kg
2.5	250	280	315	2.2
3.15	315	345	380	2.7
3.55	355	385	420	3
4	400	430	465	3.3
4.5	450	480	515	4.3
5	500	530	565	5.3
5.6	560	590	625	6
6.3	630	660	695	6.6
7.1	710	740	775	7.5
8	800	830	865	8.3
9	900	940	975	9.4
10	1000	1040	1070	10.2
11.2	1120	1160	1190	12.8
12.5	1250	1290	1320	14.4

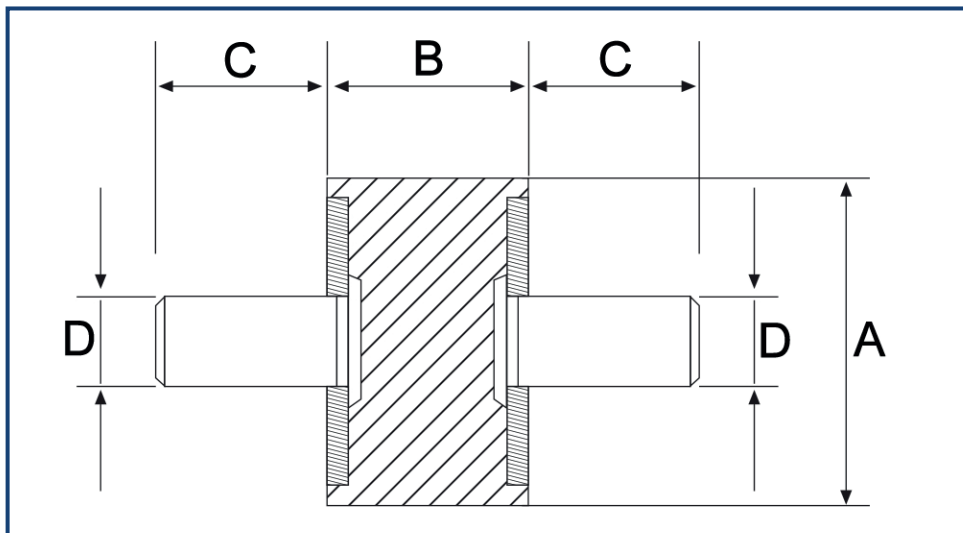
Overall and connecting dimensions of flexible rectangular inserts



Standard size fan	a1, mm	a2, mm	a3, mm	Insert weight, max kg
2.5	175	200	225	1.8
3.15	220	255	280	2.2
3.55	250	280	310	2.8
4	280	310	340	3
4.5	315	350	385	3.5
5	350	380	410	4
5.6	390	425	460	4.3
6.3	440	470	530	4.7
7.1	500	530	570	5
8	560	600	630	5.5
9	630	680	710	6.5
10	700	750	790	7.1
11.2	780	830	870	9.5
12.5	880	925	960	10.6



Vibration isolators **RV** are designed to prevent the transmission of mechanical vibration from the operating ventilation unit to its mounting surface.



Standard size fan	Vibration isolator/ quantity, pcs	D	A	B	C
2.5	RV-30/4	M8	30	30	18
3.15					
3.55					
4					
4.5					
5					
5.6	RV-40/4	M8	40	30	18
6.3					
7.1					
8	RV-50/6	M10	50	30	28
9					
10					
11.2					
12.5					



Round check valves **COD** or rectangular **COP** cross-section are designed to automatically close the cross-section of the air duct in order to exclude the possibility of free air flow in ventilation systems when the fan is not working. The valve blades open under the action of the air flow (the air speed on horizontal sections must be at least 6 m/s, on vertical sections - at least 4 m/s).

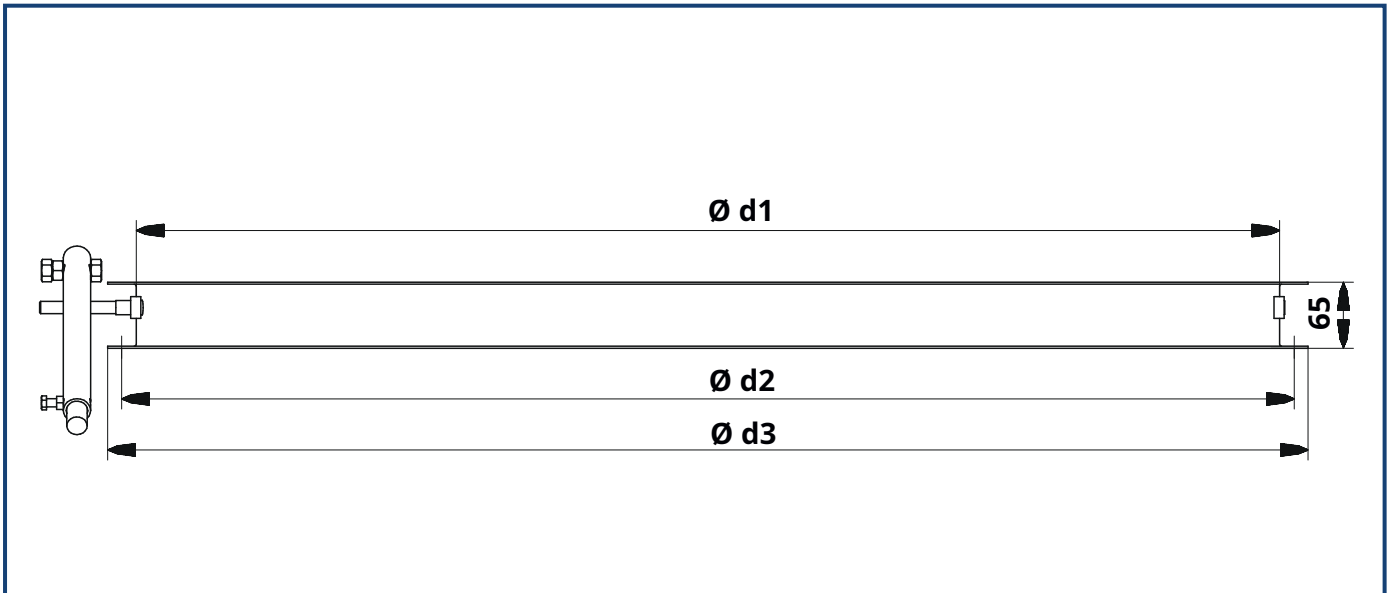
Order example

Round check valve CODE for smoke exhaust fan VR-80-70-DU-600-6.3, diameter 630mm.

COD - 630 - O

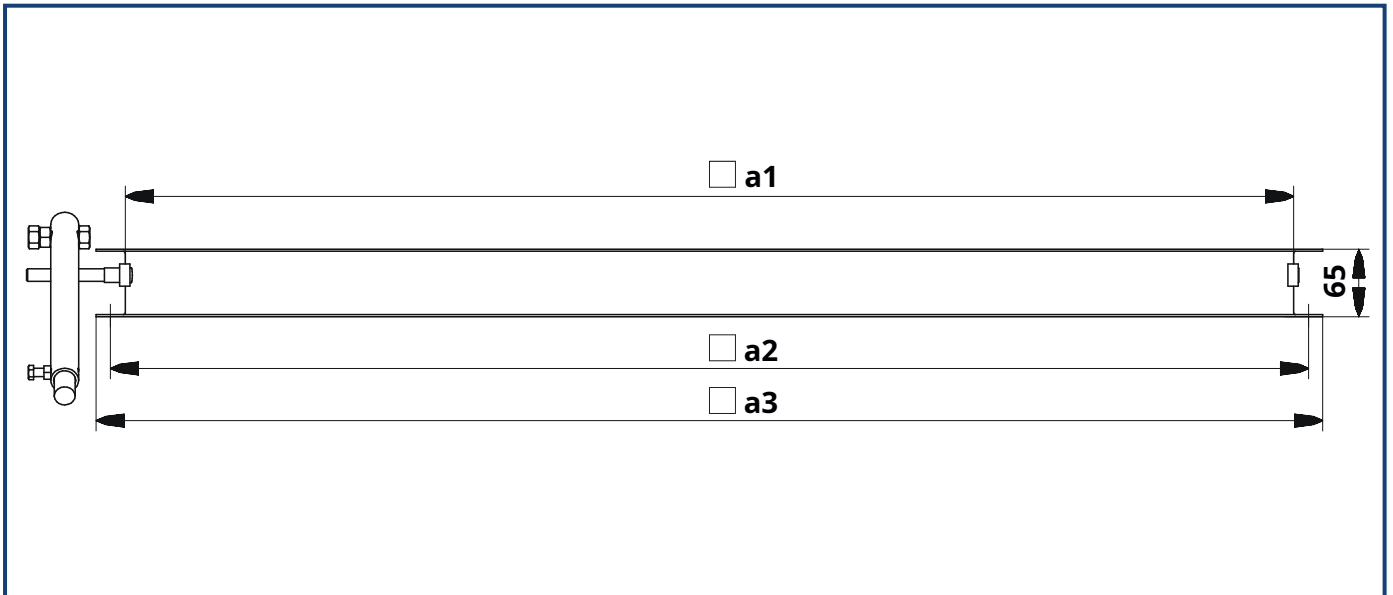
Check valve series: COD; COP;		
Fan size x100: 250; 315; 355; 400; 450; 500; 560; 630; 710; 800; 900; 1000; 1120; 1250;		
Implementation: O - general industrial/smoke extraction; K - corrosion-resistant;		

Overall and connection dimensions of round check valves

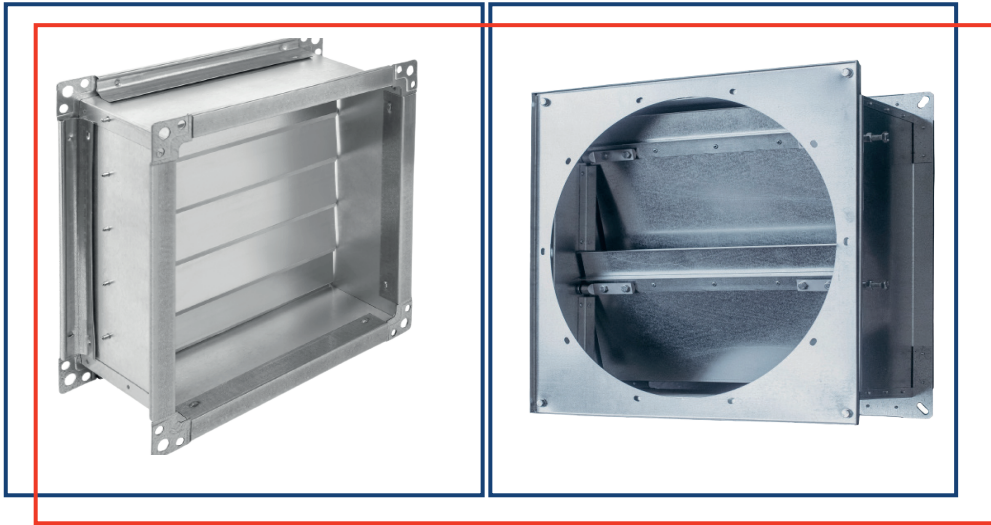


Standard size fan	d1, mm	d2, mm	d3, mm	Insert weight, max kg
2.5	250	280	315	4
3.15	315	345	380	5
3.55	355	385	420	6
4	400	430	465	7
4.5	450	480	515	8
5	500	530	565	9
5.6	560	590	625	10
6.3	630	660	695	12
7.1	710	740	775	15
8	800	830	865	17
9	900	940	975	22
10	1000	1040	1070	26
11.2	1120	1160	1190	31
12.5	1250	1290	1320	33

Overall and connection dimensions of rectangular check valves



Standard size fan	a1, mm	a2, mm	a3, mm	Insert weight, max kg
2.5	175	200	225	4
3.15	220	255	280	5
3.55	250	280	310	6
4	280	310	340	7
4.5	315	350	385	8
5	350	380	410	8
5.6	390	425	460	9
6.3	440	470	530	9
7.1	500	530	570	10
8	560	600	630	12
9	630	680	710	14
10	700	750	790	17
11.2	780	830	870	19
12.5	880	925	960	22



Butterfly valves **KOL** are intended for installation on the discharge side of fans to prevent cold air and precipitation from entering the room after the fan is turned off. In order to reduce the length of the valve, a transitional diaphragm from a round cross-section to a rectangular one can be provided. When the fan is turned on, the blades are in the open position under the action of the air flow. After the fan is turned off, the blades return to their original position and cover the valve cross-section. The minimum dynamic pressure for valve operation is 30 Pa.

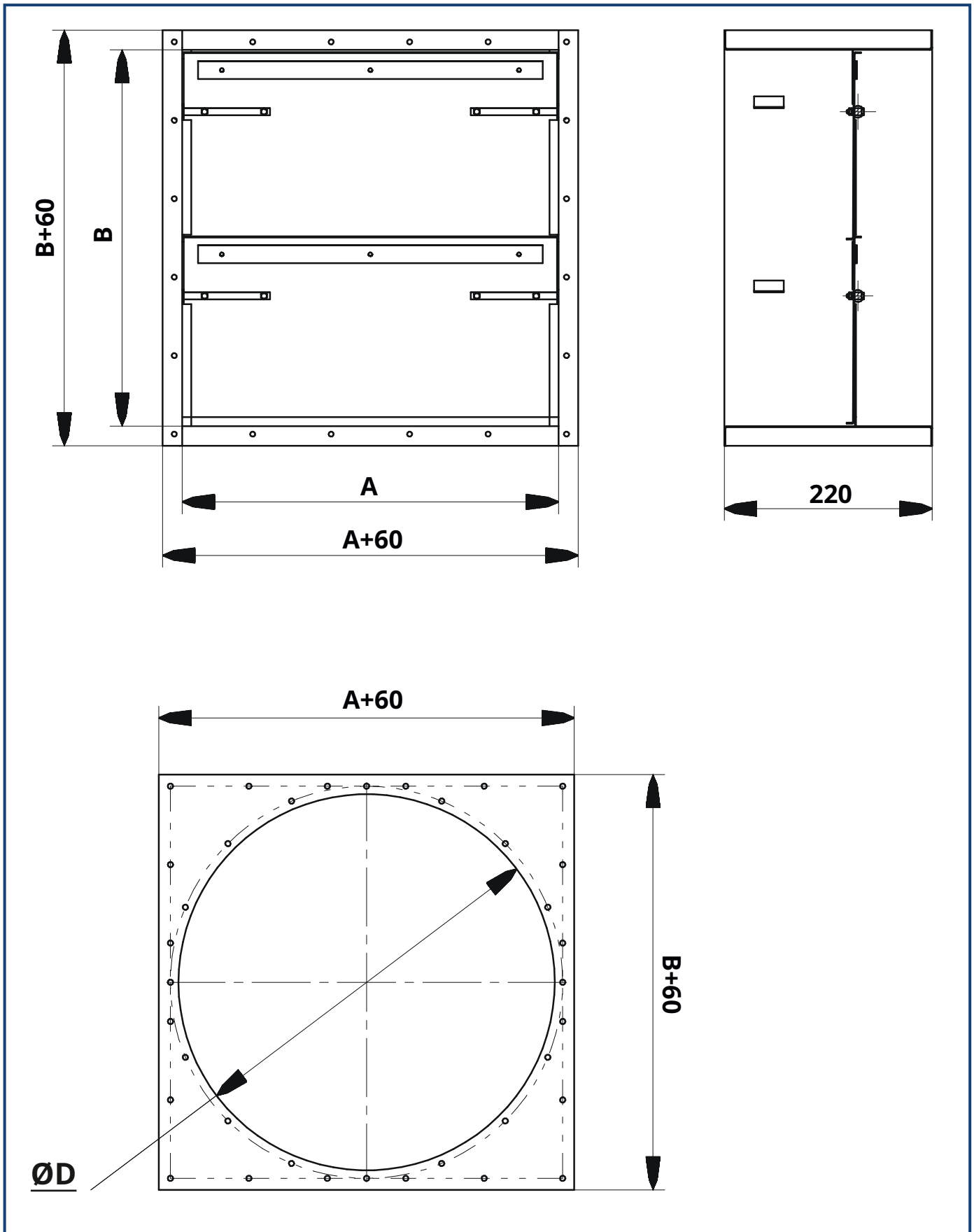
Order example

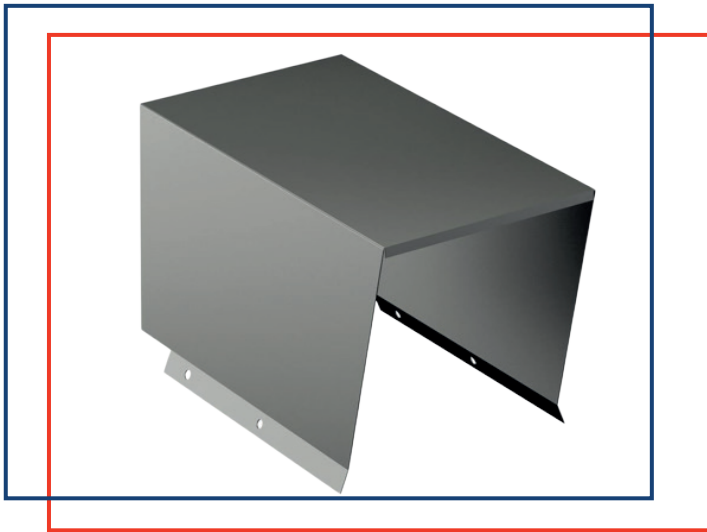
KOL flap valve for axial fan VO-5-01-4/3000 with a diameter of 500mm on one side and an air duct with a cross section of 550x550mm on the other side.

KOL - 630 - O

Butterfly valve series: KOL ;		
Valve cross-section, AxV(xD): 5 50x550xØ500		
Implementation: O - general industrial/smoke extraction; K - corrosion-resistant;		

Overall and connection dimensions of butterfly valves





Motor protection **ZED** designed to prevent precipitation from entering the structure of the radial fan electric motor.

Order example

Motor protection for radial fan VR-280-46, size 6.3, general industrial version.

	ZED - 630 - O
Motor protection series: ZED	
Fan size x100: 250; 315; 355; 400; 450; 500; 560; 630; 710; 800; 900; 1000; 1120; 1250;	
Implementation: O- general industrial/smoke extraction; K- corrosion-resistant;	



Umbrellas protective series **ZOR** designed to prevent precipitation from entering radial fans of the series **VR-80-70** and **VR-280-46**.

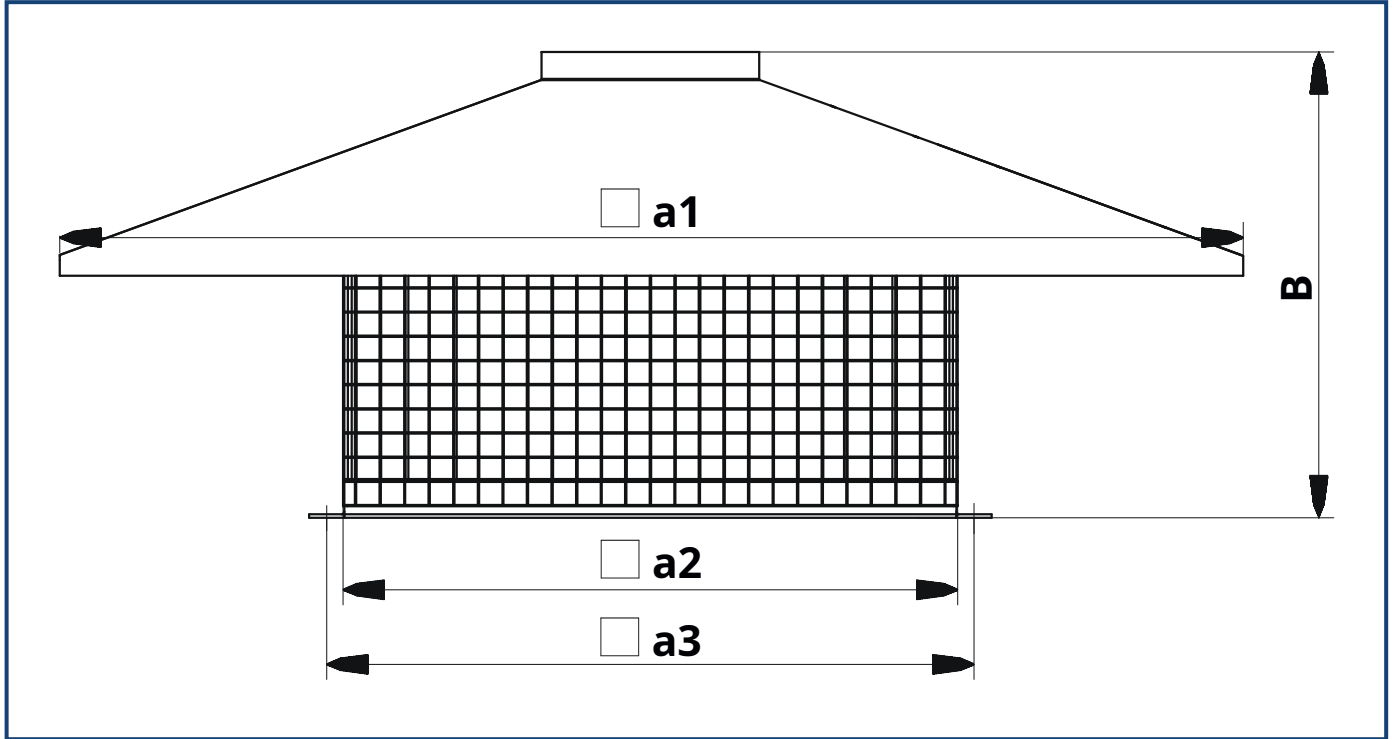
Order example

Protective umbrella for radial smoke exhaust fan VR-80-70-8-DU-600-15/1500 located in the bell.

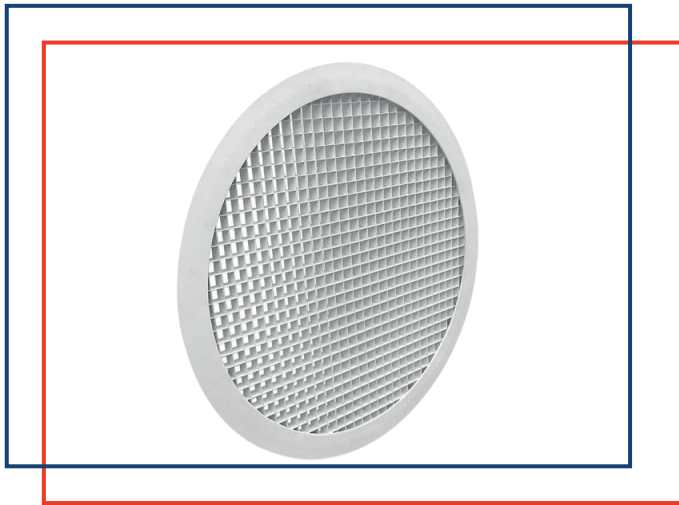
ZOR - 800 - O

Protective umbrella series: ZOR ;		
Fan size x100: 250; 315; 355; 400; 450; 500; 560; 630; 710; 800; 900; 1000; 1120; 1250 ;		
Implementation: O - general industrial/smoke extraction; K - corrosion-resistant;		

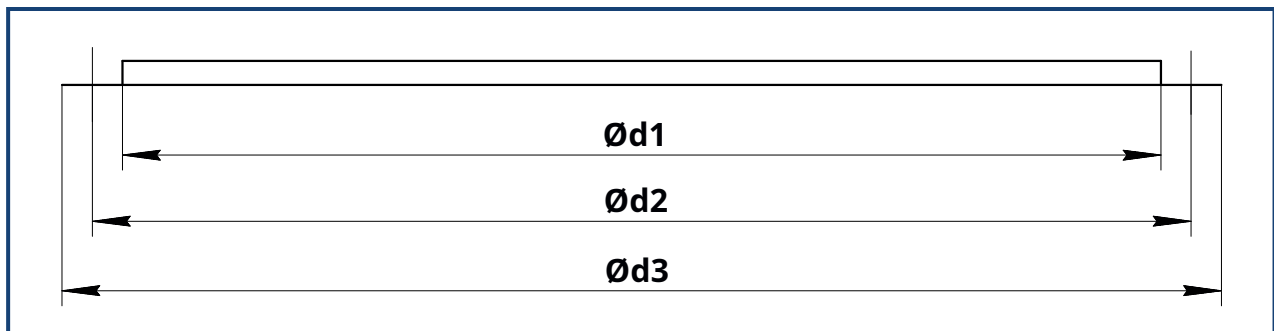
Overall and connecting dimensions of protective umbrellas



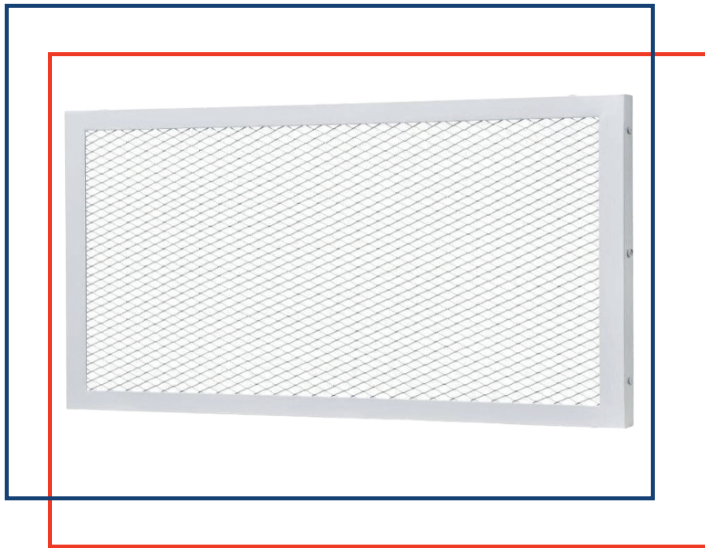
Standard size fan	a1, mm	a2, mm	a3, mm	B, mm	Insert weight, max kg
2.5	175	225	250	530	4
3.15	220	255	280	580	5
3.55	250	280	310	610	6
4	280	310	300	650	7
4.5	315	350	320	750	8
5	350	380	340	790	9
5.6	390	425	370	850	12
6.3	440	470	390	860	14
7.1	500	530	460	980	18
8	560	600	540	1100	21
9	630	680	605	1210	25
10	700	750	670	1300	29
11.2	780	830	730	1410	35
12.5	880	930	800	1540	41



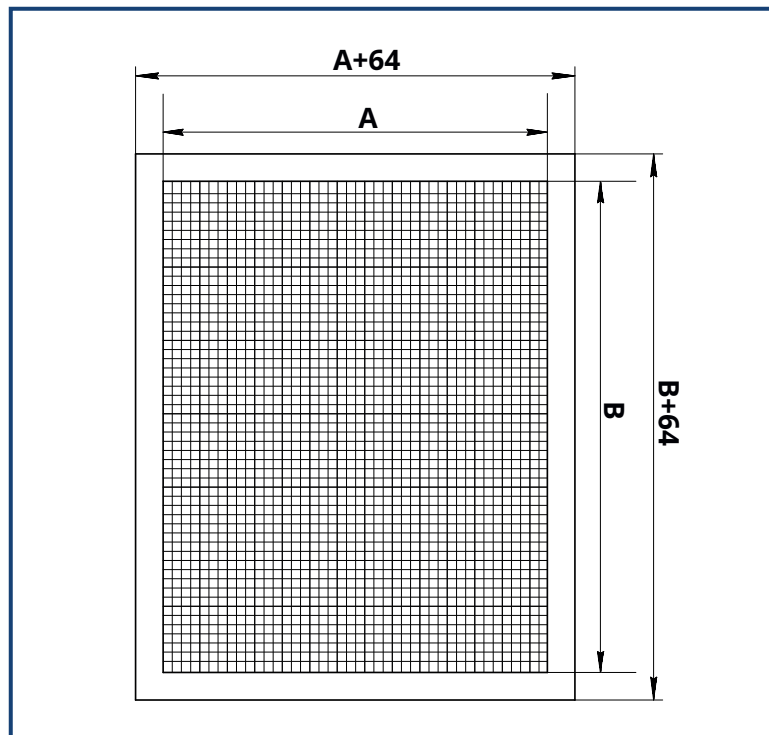
Protective nets series **SAP** are designed to protect the structures of axial and radial (suction side) fans from foreign objects entering them, which can damage or completely disable the equipment.



Standard size fan	Protective net	d1, mm	d2, mm	d3, mm	M/n holes.	Weight, kg
2.5	SAP-250	250	280	310	M7/8	1
3.15	SAM-315	315	345	375	M7/8	1
3.55	SAP-355	355	385	415	M7/8	1
4	SAP-400	400	430	460	M7/8	1
4.5	SAP-450	450	480	510	M7/10	1
5	SAP-500	500	530	560	M7/10	1
5.6	SAP-560	560	590	620	M7/10	2
6.3	SAP-630	630	660	690	M10/12	2
7.1	SAP-710	710	740	770	M10/12	2
8	SAP-800	800	830	860	M10/12	3
9	SAP-900	900	930	960	M10/16	3
10	SAP-1000	1000	1030	1060	M10/16	3
11.2	SAP-1120	1120	1150	1180	M12/18	4
12.5	SAP-1250	1250	1280	1310	M12/18	4



Protective anti-vandal nets series **SDA**
 Designed to protect smoke valves from unauthorized penetration and to protect against burning of foreign objects in the valve structure.



Order example

Anti-vandal protective mesh for smoke valve, cross-section 1000x500(h)mm, painted RAL9016

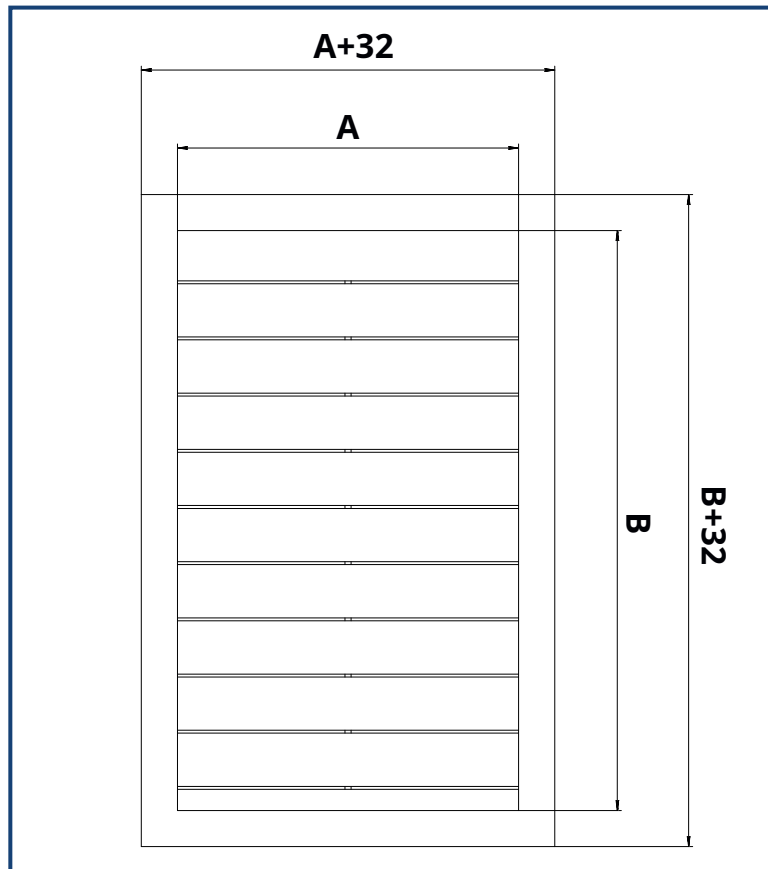
SDA - 1000x500 - RAL9016

Name: anti-vandal protective net- SDA ;		
Internal cross-section of the mesh, mm: AhV(h) ;		
Paint color: 0 - without painting; RAL.... - color according to the catalog;		



Decorative grilles, blind series **RDJ** Designed to protect smoke valves from unauthorized penetration and to protect against burning of foreign objects in the valve structure.

The material is galvanized steel.



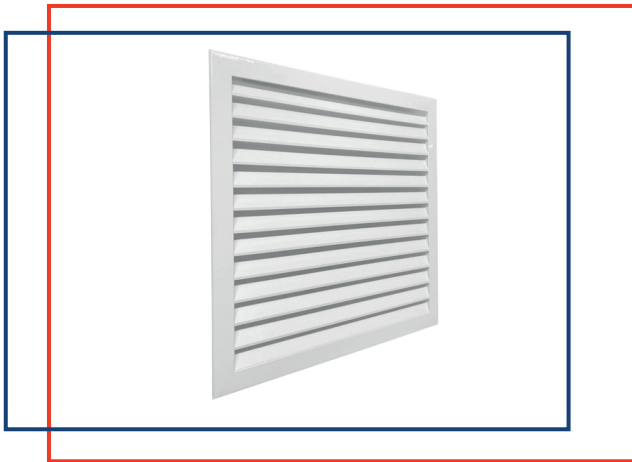
Order example

Decorative galvanized louvered grille for smoke damper, cross-section 750x1000(h)mm, painted RAL9016

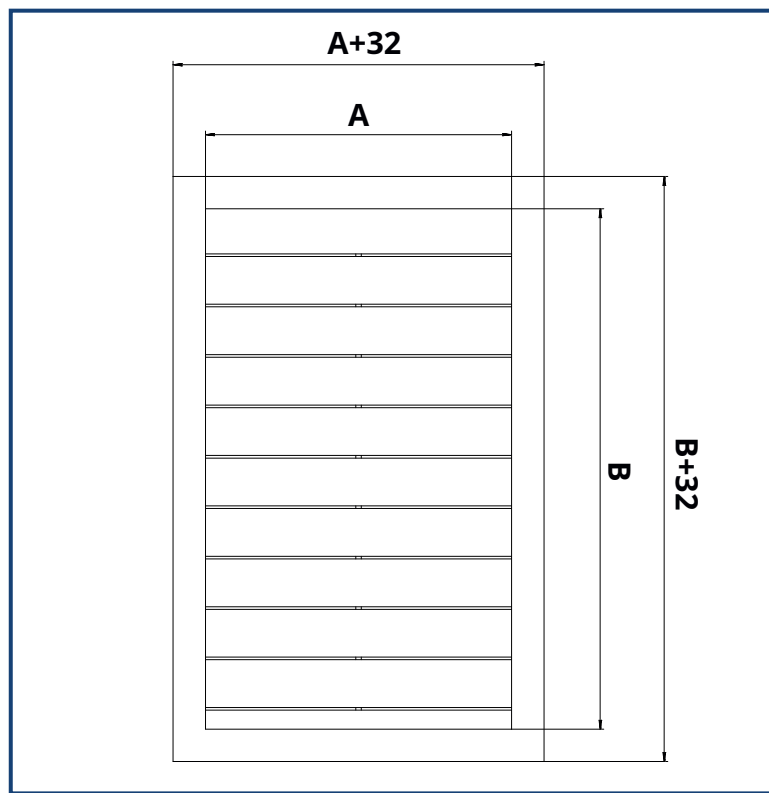
RDJ - 750x1000 - RAL9016

Name: decorative louver grille- RDJ ;		
Internal cross-section of the grille, mm: AhV(h) ;		
Paint color: 0 - without painting; RAL.... - color according to the catalog;		

Width	Height																												
	300	350	400	450	500	550	600	650	700	750	800	850	900	950	1000	1050	1100	1150	1200	1250	1300	1350	1400	1450	1500	1550	1600	1650	1700
300	0.0774	0.0906	0.1038	0.1152	0.1284	0.1416	0.1548	0.1671	0.1803	0.1935	0.2067	0.2190	0.2322	0.2454	0.2587	0.2709	0.2841	0.2974	0.3106	0.3219	0.3351	0.3483	0.3616	0.3738	0.3870	0.4003	0.4135	0.4257	0.4390
350	0.0906	0.1057	0.1218	0.1359	0.1510	0.1661	0.1822	0.1964	0.2115	0.2275	0.2426	0.2568	0.2728	0.2879	0.3030	0.3172	0.3332	0.3483	0.3644	0.3785	0.3936	0.4088	0.4248	0.4390	0.4541	0.4701	0.4852	0.4994	0.5154
400	0.1038	0.1218	0.1397	0.1558	0.1737	0.1916	0.2086	0.2256	0.2436	0.2605	0.2785	0.2955	0.3125	0.3304	0.3483	0.3664	0.3823	0.4003	0.4182	0.4342	0.4522	0.4701	0.4871	0.5041	0.5220	0.5390	0.5570	0.5740	0.5909
450	0.1171	0.1369	0.1576	0.1756	0.1954	0.2162	0.2360	0.2549	0.2747	0.2945	0.3144	0.3332	0.3531	0.3729	0.3927	0.4116	0.4314	0.4512	0.4720	0.4899	0.5098	0.5305	0.5504	0.5692	0.5891	0.6089	0.6287	0.6476	0.6674
500	0.1303	0.1529	0.1756	0.1964	0.2181	0.2407	0.2624	0.2832	0.3059	0.3276	0.3502	0.3710	0.3936	0.4154	0.4380	0.4588	0.4805	0.5032	0.5258	0.5466	0.5683	0.5909	0.6127	0.6334	0.6561	0.6778	0.7004	0.7212	0.7439
550	0.1444	0.1690	0.1935	0.2162	0.2407	0.2653	0.2898	0.3125	0.3370	0.3616	0.3861	0.4088	0.4333	0.4578	0.4824	0.5060	0.5305	0.5551	0.5796	0.6023	0.6268	0.6514	0.6759	0.6986	0.7231	0.7476	0.7722	0.7948	0.8194
600	0.1576	0.1841	0.2115	0.2360	0.2634	0.2898	0.3162	0.3417	0.3682	0.3955	0.4220	0.4475	0.4729	0.5003	0.5277	0.5522	0.5796	0.6060	0.6334	0.6580	0.6853	0.7118	0.7382	0.7637	0.7901	0.8175	0.8439	0.8694	0.8959
650	0.1709	0.2001	0.2294	0.2568	0.2851	0.3144	0.3436	0.3710	0.4003	0.4286	0.4578	0.4852	0.5145	0.5437	0.5721	0.5994	0.6287	0.6580	0.6872	0.7146	0.7429	0.7722	0.8015	0.8288	0.8551	0.8864	0.9157	0.9431	0.9723
700	0.1841	0.2152	0.2473	0.2766	0.3077	0.3389	0.3700	0.4003	0.4314	0.4626	0.4937	0.5230	0.5541	0.5862	0.6174	0.6466	0.6778	0.7089	0.7410	0.7703	0.8015	0.8326	0.8638	0.8940	0.9251	0.9563	0.9874	1.0167	1.0478
750	0.1973	0.2313	0.2653	0.2964	0.3304	0.3634	0.3974	0.4286	0.4626	0.4956	0.5296	0.5617	0.5947	0.6287	0.6617	0.6938	0.7269	0.7609	0.7948	0.8260	0.8600	0.8930	0.9270	0.9582	0.9921	1.0252	1.0592	1.0913	1.1243
800	0.2115	0.2473	0.2832	0.3162	0.3521	0.3880	0.4239	0.4578	0.4937	0.5296	0.5655	0.5994	0.6333	0.6712	0.7071	0.7410	0.7769	0.8128	0.8487	0.8817	0.9176	0.9534	0.9893	1.0233	1.0592	1.0950	1.1309	1.1649	1.2008
850	0.2247	0.2624	0.3011	0.3370	0.3748	0.4125	0.4512	0.4871	0.5249	0.5636	0.6013	0.6372	0.6759	0.7137	0.7514	0.7873	0.8260	0.8638	0.9025	0.9383	0.9761	1.0139	1.0526	1.0884	1.1262	1.1649	1.2027	1.2385	1.2772
900	0.2379	0.2785	0.3191	0.3568	0.3974	0.4380	0.4777	0.5164	0.5570	0.5966	0.6372	0.6759	0.7156	0.7561	0.7967	0.8345	0.8751	0.9157	0.9563	0.9940	1.0346	1.0752	1.1149	1.1536	1.1942	1.2338	1.2744	1.3131	1.3528
950	0.2511	0.2986	0.3370	0.3767	0.4191	0.4626	0.5050	0.5456	0.5881	0.6306	0.6731	0.7137	0.7561	0.7986	0.8411	0.8817	0.9242	0.9667	1.0101	1.0497	1.0922	1.1356	1.1781	1.2187	1.2612	1.3037	1.3461	1.3867	1.4292
1000	0.2643	0.3096	0.3549	0.3974	0.4418	0.4871	0.5315	0.5740	0.6193	0.6636	0.7089	0.7514	0.7967	0.8411	0.8864	0.9289	0.9733	1.0186	1.0639	1.1064	1.1507	1.1960	1.2404	1.2829	1.3282	1.3726	1.4179	1.4604	1.5057
1050	0.2785	0.3257	0.3729	0.4172	0.4644	0.5116	0.5588	0.6032	0.6504	0.6976	0.7448	0.7892	0.8364	0.8836	0.9308	0.8883	0.9308	0.9742	1.0176	1.0573	1.1007	1.1441	1.1866	1.2272	1.2706	1.3131	1.3565	1.3971	1.4396
1100	0.2917	0.3408	0.3908	0.4371	0.4871	0.5362	0.5853	0.6325	0.6816	0.7316	0.7807	0.8279	0.8770	0.9261	0.9761	0.9355	0.9808	1.0261	1.0714	1.1139	1.1592	1.2045	1.2499	1.2923	1.3376	1.3830	1.4283	1.4708	1.5161
1150	0.3049	0.3568	0.4088	0.4578	0.5088	0.5607	0.6127	0.6617	0.7137	0.7646	0.8166	0.8656	0.9176	0.9695	1.0205	0.9818	1.0299	1.0771	1.1252	1.1696	1.2168	1.2650	1.3122	1.3575	1.4047	1.4519	1.5000	1.5444	1.5925
1200	0.3181	0.3719	0.4267	0.4777	0.5315	0.5853	0.6391	0.6910	0.7448	0.7986	0.8524	0.9034	0.9572	1.0120	1.0658	1.0290	1.0790	1.1290	1.1791	1.2253	1.2753	1.3254	1.3754	1.4217	1.4717	1.5217	1.5718	1.6180	1.6680
1250	0.3313	0.3880	0.4446	0.4975	0.5541	0.6098	0.6655	0.7193	0.7760	0.8317	0.8883	0.9421	0.9978	1.0544	1.1101	1.0762	1.1281	1.1800	1.2329	1.2820	1.3359	1.3858	1.4377	1.4868	1.5387	1.5916	1.6435	1.6926	1.7445
1300	0.3455	0.4040	0.4626	0.5173	0.5758	0.6344	0.6929	0.7486	0.8071	0.8656	0.9242	0.9799	1.0384	1.0969	1.1555	1.1234	1.1772	1.2319	1.2867	1.3376	1.3915	1.4462	1.5010	1.5519	1.6067	1.6605	1.7152	1.7662	1.8210
1350	0.3587	0.4191	0.4805	0.5381	0.5985	0.6589	0.7203	0.7779	0.8383	0.8996	0.9600	1.0176	1.0790	1.1394	1.1998	1.1706	1.2272	1.2838	1.3405	1.3933	1.4500	1.5066	1.5633	1.6171	1.6737	1.7304	1.7870	1.8399	1.8965
1400	0.3719	0.4352	0.4984	0.5579	0.6212	0.6844	0.7467	0.8071	0.8704	0.9327	0.9959	1.0563	1.1186	1.1819	1.2451	1.2168	1.2763	1.3348	1.3943	1.4490	1.5085	1.5670	1.6265	1.6822	1.7407	1.7993	1.8587	1.9144	1.9730
1450	0.3852	0.4503	0.5164	0.5777	0.6429	0.7089	0.7741	0.8364	0.9015	0.9667	1.0318	1.0941	1.1592	1.2244	1.2895	1.2640	1.3254	1.3867	1.4481	1.5057	1.5670	1.6275	1.6888	1.7464	1.8078	1.8691	1.9305	1.9881	2.0494
1500	0.3984	0.4663	0.5343	0.5985	0.6655	0.7335	0.8005	0.8647	0.9327	0.9997	1.0677	1.1319	1.1998	1.2668	1.3348	1.3112	1.3745	1.4377	1.5019	1.5614	1.6246	1.6879	1.7521	1.8115	1.8748	1.9390	2.0022	2.0617	2.1249
1550	0.4125	0.4824	0.5522	0.6183	0.6882	0.7580	0.8279	0.8940	0.9638	1.0337	1.1035	1.1696	1.2395	1.3093	1.3792	1.3584	1.4236	1.4896	1.5557	1.6171	1.6832	1.7492	1.8144	1.8767	1.9428	2.0079	2.0740	2.1363	2.2014
1600	0.4257	0.4975	0.5702	0.6381	0.7108	0.7826	0.8543	0.9232	0.9950	1.0677	1.1394	1.2083	1.2801	1.3518	1.4245	1.4056	1.4736	1.5416	1.6095	1.6737	1.7417	1.8096	1.8776	1.9418	2.0098	2.0777	2.1457	2.2099	2.2779
1650	0.4390	0.5135	0.5881	0.6589	0.7325	0.8071	0.8817	0.9525	1.0271	1.1007	1.1753	1.2461	1.3207	1.3952	1.4689	1.4519	1.5227	1.5925	1.6633	1.7294	1.7993	1.8701	1.9399	2.0069	2.0768	2.1467	2.2175	2.2835	2.3543
1700	0.4522	0.5286	0.6060	0.6787	0.7552	0.8317	0.9081	0.9818	1.0582	1.1347	1.2112	1.2838	1.3603	1.4377	1.5142	1.4991	1.5718	1.6444	1.7171	1.7851	1.8578	1.9305	2.0032	2.0711	2.1438	2.2165	2.2892	2.3572	2.4299
1750	0.4408	0.5154	0.5900	0.6608	0.7354	0.8109	0.8855	0.9563	1.0308	1.1054	1.1800	1.2508	1.3263	1.4009	1.4755	1.5463	1.6208	1.6954	1.7709	1.8417	1.9163	1.9909	2.0655	2.1363	2.2108	2.2864	2.3609	2.4317	2.5063
1800	0.4541	0.5315	0.6079	0.6806	0.7580	0.8354	0.9119	0.9855	1.0620	1.1394	1.2159	1.2895	1.3660	1.4434	1.5208	1.5935	1.6699	1.7473	1.8248	1.8974	1.9739	2.0513	2.1287	2.2014	2.2788	2.3553	2.4327	2.5054	2.5828
1850	0.4673	0.5466	0.6259	0.7014	0.7807	0.8600	0.9393	1.0139	1.0932	1.1724	1.2517	1.3273	1.4066	1.4859	1.5652	1.6407	1.7200	1.7993	1.8786	1.9531	2.0324	2.1117	2.1910	2.2665	2.3458	2.4251	2.5044	2.5790	2.6583
1900	0.4805	0.5626	0.6438	0.7212	0.8024	0.8845	0.9657	1.0431	1.1252	1.2064	1.2876	1.3650	1.4472	1.5283	1.6105	1.6869	1.7691	1.8502	1.9324	2.0088	2.0910	2.1721	2.2543	2.3317	2.4129	2.4940	2.5762	2.6536	2.7348
1950	0.4947	0.5777	0.6617	0.7410	0.8251	0.9091	0.9931	1.0724	1.1564	1.2404	1.3235	1.4037	1.4868	1.5708	1.6548	1.7341	1.8181	1.9022	1.9862	2.0655	2.1495	2.2326	2.3166	2.3959	2.4799	2.5639	2.6479	2.7272	2.8112
2000	0.5079	0.5938	0.6797	0.7618	0.8477	0.9336	1.0195	1.1016	1.1876	1.2735	1.3594	1.4415	1.5274	1.6133	1.7001	1.7813	1.8672	1.9531	2.0400	2.1212	2.2071	2.2930	2.3798	2.4610	2.5469	2.6338	2.7197	2.8008	2.8868



Decorative aluminum grilles series **RDA**
 Designed to protect smoke valves from unauthorized penetration and to protect against burning of foreign objects in the valve structure.
 The material is aluminum.



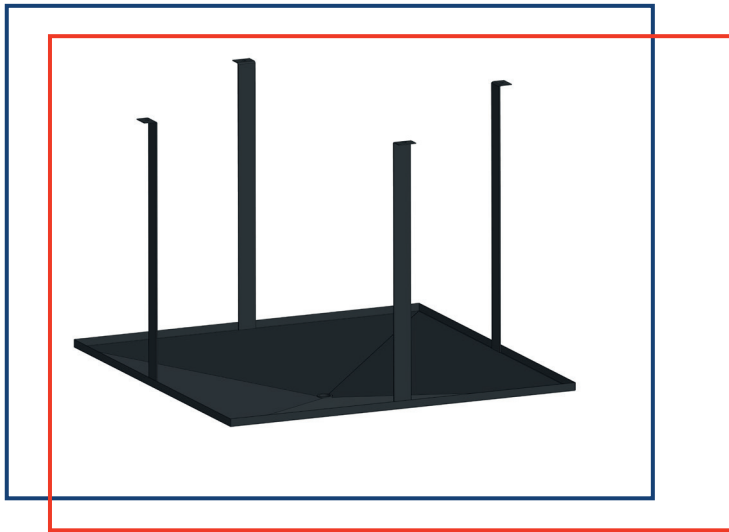
Order example

Decorative aluminum grille for smoke valve, cross-section 1100x400(h)mm, painted RAL9016

RDA - 1100x400 - RAL9016

Name: decorative aluminum grille- RDA ;		
Internal cross-section of the grille, mm: AhV(h) ;		
Paint color: 0 - without painting; RAL.... - color according to the catalog;		

Width	Height																													
	300	350	400	450	500	550	600	650	700	750	800	850	900	950	1000	1050	1100	1150	1200	1250	1300	1350	1400	1450	1500	1550	1600	1650	1700	
300	0.0653	0.0772	0.0892	0.1011	0.1130	0.1250	0.1369	0.1488	0.1607	0.1727	0.1846	0.1965	0.2085	0.2204	0.2323	0.2442	0.2561	0.2680	0.2799	0.2918	0.3037	0.3156	0.3275	0.3394	0.3513	0.3632	0.3751	0.3870	0.3989	0.4108
350	0.0768	0.0908	0.1049	0.1189	0.1329	0.1470	0.1610	0.1750	0.1890	0.2031	0.2171	0.2311	0.2452	0.2592	0.2732	0.2872	0.3012	0.3152	0.3292	0.3432	0.3572	0.3712	0.3852	0.3992	0.4132	0.4272	0.4412	0.4552	0.4692	0.4832
400	0.0883	0.1044	0.1206	0.1367	0.1528	0.1690	0.1851	0.2012	0.2173	0.2335	0.2496	0.2657	0.2819	0.2980	0.3141	0.3302	0.3463	0.3624	0.3785	0.3946	0.4107	0.4268	0.4429	0.4590	0.4751	0.4912	0.5073	0.5234	0.5395	0.5556
450	0.0998	0.1180	0.1363	0.1545	0.1727	0.1910	0.2092	0.2274	0.2456	0.2639	0.2821	0.3003	0.3186	0.3368	0.3550	0.3732	0.3914	0.4096	0.4278	0.4460	0.4642	0.4824	0.5006	0.5188	0.5370	0.5552	0.5734	0.5916	0.6098	0.6280
500	0.1113	0.1316	0.1520	0.1723	0.1926	0.2130	0.2333	0.2536	0.2739	0.2943	0.3146	0.3349	0.3553	0.3756	0.3959	0.4162	0.4365	0.4568	0.4771	0.4974	0.5177	0.5380	0.5583	0.5786	0.5989	0.6192	0.6395	0.6598	0.6801	0.7004
550	0.1228	0.1452	0.1677	0.1901	0.2125	0.2350	0.2574	0.2798	0.3022	0.3247	0.3471	0.3695	0.3920	0.4144	0.4368	0.4592	0.4816	0.5040	0.5264	0.5488	0.5712	0.5936	0.6160	0.6384	0.6608	0.6832	0.7056	0.7280	0.7504	0.7728
600	0.1343	0.1588	0.1834	0.2079	0.2324	0.2570	0.2815	0.3060	0.3305	0.3551	0.3796	0.4041	0.4287	0.4532	0.4777	0.5022	0.5267	0.5512	0.5757	0.6002	0.6247	0.6492	0.6737	0.6982	0.7227	0.7472	0.7717	0.7962	0.8207	0.8452
650	0.1458	0.1724	0.1991	0.2257	0.2523	0.2790	0.3056	0.3322	0.3588	0.3855	0.4121	0.4387	0.4654	0.4920	0.5186	0.5452	0.5718	0.5984	0.6250	0.6516	0.6782	0.7048	0.7314	0.7580	0.7846	0.8112	0.8378	0.8644	0.8910	0.9176
700	0.1573	0.1860	0.2148	0.2435	0.2722	0.3010	0.3297	0.3584	0.3871	0.4159	0.4446	0.4733	0.5021	0.5308	0.5595	0.5882	0.6169	0.6456	0.6743	0.7030	0.7317	0.7604	0.7891	0.8178	0.8465	0.8752	0.9039	0.9326	0.9613	0.9900
750	0.1688	0.1996	0.2305	0.2613	0.2921	0.3230	0.3538	0.3846	0.4154	0.4463	0.4771	0.5079	0.5388	0.5696	0.6004	0.6312	0.6620	0.6928	0.7236	0.7544	0.7852	0.8160	0.8468	0.8776	0.9084	0.9392	0.9700	1.0008	1.0316	1.0624
800	0.1803	0.2132	0.2462	0.2791	0.3120	0.3450	0.3779	0.4108	0.4437	0.4767	0.5096	0.5425	0.5755	0.6084	0.6413	0.6742	0.7071	0.7400	0.7729	0.8058	0.8387	0.8716	0.9045	0.9374	0.9703	1.0032	1.0361	1.0690	1.1019	1.1348
850	0.1918	0.2268	0.2619	0.2969	0.3319	0.3670	0.4020	0.4370	0.4720	0.5071	0.5421	0.5771	0.6122	0.6472	0.6822	0.7172	0.7522	0.7872	0.8222	0.8572	0.8922	0.9272	0.9622	0.9972	1.0322	1.0672	1.1022	1.1372	1.1722	1.2072
900	0.2033	0.2404	0.2776	0.3147	0.3518	0.3890	0.4261	0.4632	0.5003	0.5375	0.5746	0.6117	0.6488	0.6859	0.7230	0.7601	0.7972	0.8343	0.8714	0.9085	0.9456	0.9827	1.0198	1.0569	1.0940	1.1311	1.1682	1.2053	1.2424	1.2795
950	0.2148	0.2540	0.2933	0.3325	0.3717	0.4110	0.4502	0.4894	0.5286	0.5679	0.6071	0.6463	0.6856	0.7248	0.7640	0.8032	0.8424	0.8816	0.9208	0.9600	0.9992	1.0384	1.0776	1.1168	1.1560	1.1952	1.2344	1.2736	1.3128	1.3520
1000	0.2263	0.2676	0.309	0.3503	0.3916	0.433	0.4743	0.5156	0.5569	0.5983	0.6396	0.6809	0.7223	0.7636	0.8049	0.8462	0.8875	0.9288	0.9701	1.0114	1.0527	1.0940	1.1353	1.1766	1.2179	1.2592	1.3005	1.3418	1.3831	1.4244
1050	0.2341	0.2768	0.3197	0.3624	0.4051	0.448	0.4907	0.5334	0.5761	0.619	0.6617	0.7044	0.7473	0.79	0.8327	0.8754	0.9181	0.9608	1.0035	1.0462	1.0889	1.1316	1.1743	1.2170	1.2597	1.3024	1.3451	1.3878	1.4305	1.4732
1100	0.2456	0.2904	0.3354	0.3802	0.425	0.47	0.5148	0.5596	0.6044	0.6494	0.6942	0.739	0.784	0.8288	0.8736	0.9184	0.9632	1.0080	1.0528	1.0976	1.1424	1.1872	1.2320	1.2768	1.3216	1.3664	1.4112	1.4560	1.5008	1.5456
1150	0.2571	0.304	0.3511	0.398	0.4449	0.492	0.5389	0.5858	0.6327	0.6798	0.7267	0.7736	0.8207	0.8676	0.9145	0.9614	1.0083	1.0552	1.1021	1.1490	1.1959	1.2428	1.2897	1.3366	1.3835	1.4304	1.4773	1.5242	1.5711	1.6180
1200	0.2686	0.3176	0.3668	0.4158	0.4648	0.514	0.563	0.612	0.661	0.7102	0.7592	0.8082	0.8574	0.9064	0.9554	1.0044	1.0534	1.1024	1.1514	1.2004	1.2494	1.2984	1.3474	1.3964	1.4454	1.4944	1.5434	1.5924	1.6414	1.6904
1250	0.2801	0.3312	0.3825	0.4336	0.4847	0.536	0.5871	0.6382	0.6893	0.7406	0.7917	0.8428	0.8941	0.9452	0.9963	1.0474	1.0985	1.1496	1.2007	1.2518	1.3029	1.3540	1.4051	1.4562	1.5073	1.5584	1.6095	1.6606	1.7117	1.7628
1300	0.2916	0.3448	0.3982	0.4514	0.5046	0.558	0.6112	0.6644	0.7176	0.771	0.8242	0.8774	0.9308	0.984	1.0372	1.0904	1.1436	1.1968	1.2500	1.3032	1.3564	1.4096	1.4628	1.5160	1.5692	1.6224	1.6756	1.7288	1.7820	1.8352
1350	0.3031	0.3584	0.4139	0.4692	0.5245	0.58	0.6353	0.6906	0.7459	0.8014	0.8567	0.912	0.9675	1.0228	1.0781	1.1334	1.1887	1.2440	1.2993	1.3546	1.4099	1.4652	1.5205	1.5758	1.6311	1.6864	1.7417	1.7970	1.8523	1.9076
1400	0.3146	0.372	0.4296	0.487	0.5444	0.602	0.6594	0.7168	0.7742	0.8318	0.8892	0.9466	1.0040	1.0614	1.1188	1.1762	1.2336	1.2910	1.3484	1.4058	1.4632	1.5206	1.5780	1.6354	1.6928	1.7502	1.8076	1.8650	1.9224	1.9798
1450	0.3261	0.3856	0.4453	0.5048	0.5643	0.624	0.6835	0.743	0.8025	0.8622	0.9217	0.9812	1.0409	1.1004	1.1599	1.2194	1.2789	1.3384	1.3979	1.4574	1.5169	1.5764	1.6359	1.6954	1.7549	1.8144	1.8739	1.9334	1.9929	2.0524
1500	0.3376	0.3992	0.461	0.5226	0.5842	0.646	0.7076	0.7692	0.8308	0.8926	0.9542	1.0158	1.0774	1.1390	1.2006	1.2622	1.3238	1.3854	1.4470	1.5086	1.5702	1.6318	1.6934	1.7550	1.8166	1.8782	1.9398	2.0014	2.0630	2.1246
1550	0.3491	0.4128	0.4767	0.5404	0.6041	0.668	0.7317	0.7954	0.8591	0.923	0.9867	1.0504	1.1143	1.178	1.2417	1.3054	1.3691	1.4328	1.4965	1.5602	1.6239	1.6876	1.7513	1.8150	1.8787	1.9424	2.0061	2.0698	2.1335	2.1972
1600	0.3606	0.4264	0.4924	0.5582	0.624	0.69	0.7558	0.8216	0.8874	0.9534	1.0192	1.085	1.151	1.2168	1.2826	1.3484	1.4142	1.4800	1.5458	1.6116	1.6774	1.7432	1.8090	1.8748	1.9406	2.0064	2.0722	2.1380	2.2038	2.2696
1650	0.3721	0.44	0.5081	0.576	0.6439	0.712	0.7799	0.8478	0.9157	0.9838	1.0517	1.1196	1.1877	1.2556	1.3235	1.3914	1.4593	1.5272	1.5951	1.6630	1.7309	1.7988	1.8667	1.9346	2.0025	2.0704	2.1383	2.2062	2.2741	2.3420
1700	0.3836	0.4536	0.5238	0.5938	0.6638	0.734	0.804	0.874	0.944	1.0142	1.0842	1.1542	1.2244	1.2944	1.3644	1.4344	1.5044	1.5744	1.6444	1.7144	1.7844	1.8544	1.9244	1.9944	2.0644	2.1344	2.2044	2.2744	2.3444	2.4144
1750	0.3951	0.4672	0.5395	0.6116	0.6837	0.756	0.8281	0.9002	0.9723	1.0446	1.1167	1.1888	1.2611	1.3332	1.4053	1.4774	1.5495	1.6216	1.6937	1.7658	1.8379	1.9100	1.9821	2.0542	2.1263	2.1984	2.2705	2.3426	2.4147	2.4868
1800	0.4066	0.4808	0.5552	0.6294	0.7036	0.778	0.8522	0.9264	1.0006	1.075	1.1492	1.2234	1.2978	1.372	1.4462	1.5204	1.5946	1.6688	1.7430	1.8172	1.8914	1.9656	2.0398	2.1140	2.1882	2.2624	2.3366	2.4108	2.4850	2.5592
1850	0.4181	0.4944	0.5709	0.6472	0.7235	0.8	0.8763	0.9526	1.0289	1.1054	1.1817	1.258	1.3345	1.4108	1.4871	1.5634	1.6397	1.7160	1.7923	1.8686	1.9449	2.0212	2.0975	2.1738	2.2501	2.3264	2.4027	2.4790	2.5553	2.6316
1900	0.4296	0.508	0.5866	0.665	0.7434	0.822	0.9004	0.9788	1.0572	1.1358	1.2142	1.2926	1.3712	1.4496	1.528	1.6064	1.6848	1.7632	1.8416	1.9200	1.9984	2.0768	2.1552	2.2336	2.3120	2.3904	2.4688	2.5472	2.6256	2.7040
1950	0.4411	0.5216	0.6023	0.6828	0.7633	0.844	0.9245	1.005	1.0855	1.1662	1.2467	1.3272	1.4079	1.4884	1.5689	1.6494	1.7299	1.8104	1.8909	1.9714	2.0519	2.1324	2.2129	2.2934	2.3739	2.4544	2.5349	2.6154	2.6959	2.7764
2000	0.4526	0.5352	0.618	0.7006	0.7832	0.866	0.9486	1.0312	1.1138	1.1966	1.2792	1.3618	1.4444	1.527	1.6096	1.6922	1.7748	1.8574	1.9400	2.0226	2.1052	2.1878	2.2704	2.3530	2.4356	2.5182	2.6008	2.6834	2.7660	2.8486



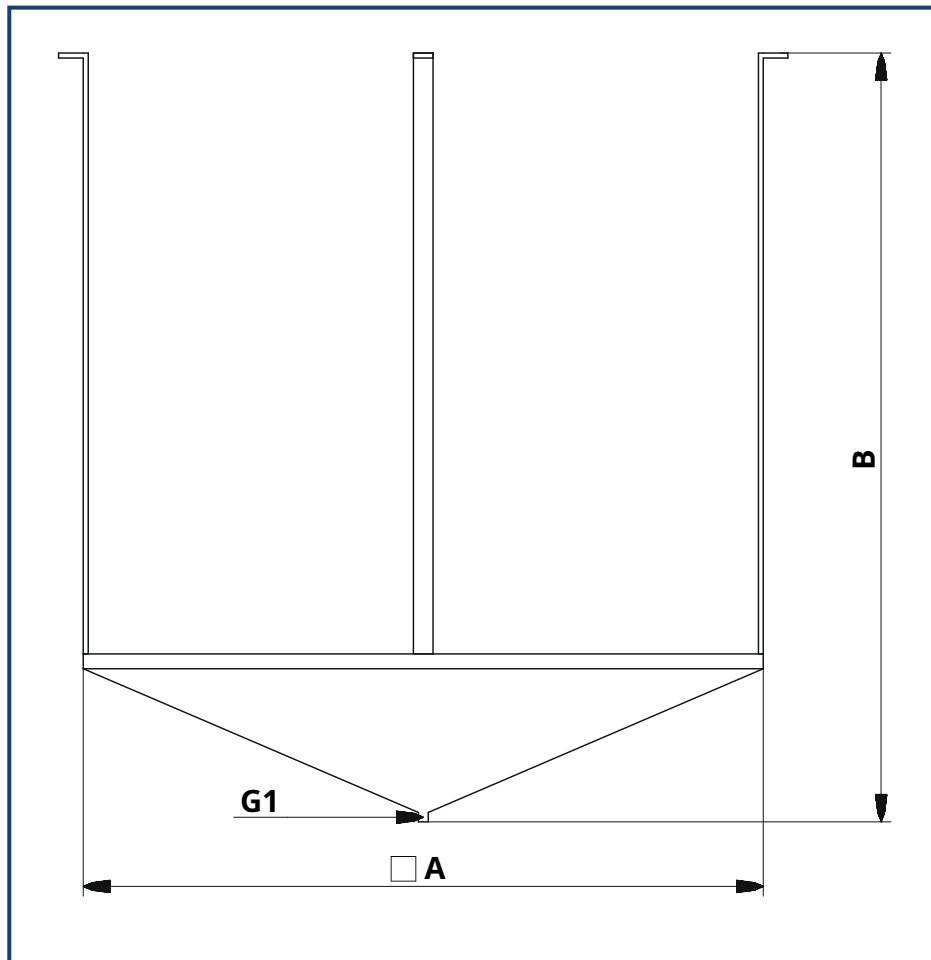
Pallet series **PID** are designed to collect condensate formed at the junction of moist warm air coming from the room and the cold metal parts of the mounting glass. The tray is attached to the mounting cup **STM** or pipe **PAK** with smoke valve **KD** from below with adjustable suspensions using bolts. Condensate drainage from the pan is possible through a 1 inch diameter pipe.

Order example

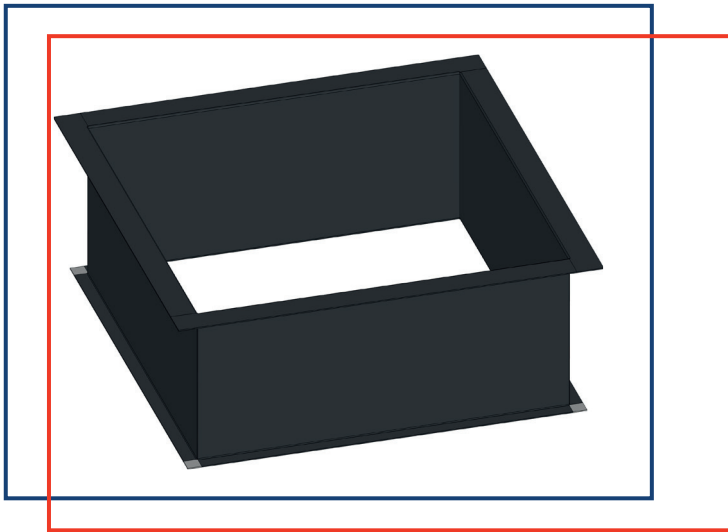
Tray for roof smoke exhaust fan VKRN-V-11.2-DU-600-30/1000 with mounting cup STM-U-140-KO-O

	PID - 140 - O
Pallet series: PID ;	
Standard size of the STM mounting cup: 72; 92; 115; 140; 156 ;	
Implementation: O - general industrial/smoke extraction; K - corrosion-resistant;	

Overall and connecting dimensions of pallets



Fan type gauge Installed power, kW	Glass assembly	Pallet	A, mm	In, mm	Weight, kg
5	STM-72	PID-72	600	1125	7
5.6			600	1125	7
6.3	STM-92	PID-92	800	1125	13
7.1			800	1125	13
8	STM-115	PID-115	1050	1125	22
9			1050	1125	22
10	STM-140	PID-140	1300	1125	35
11.2			1300	1125	35
12.5	STM-156	PID-156	1400	1125	46



Series nozzles **PAK** intended for installation of a smoke valve **KD**, pallet **PID** or air duct directly after the mounting cup **STM** roof fan **VKRN(-V)**.

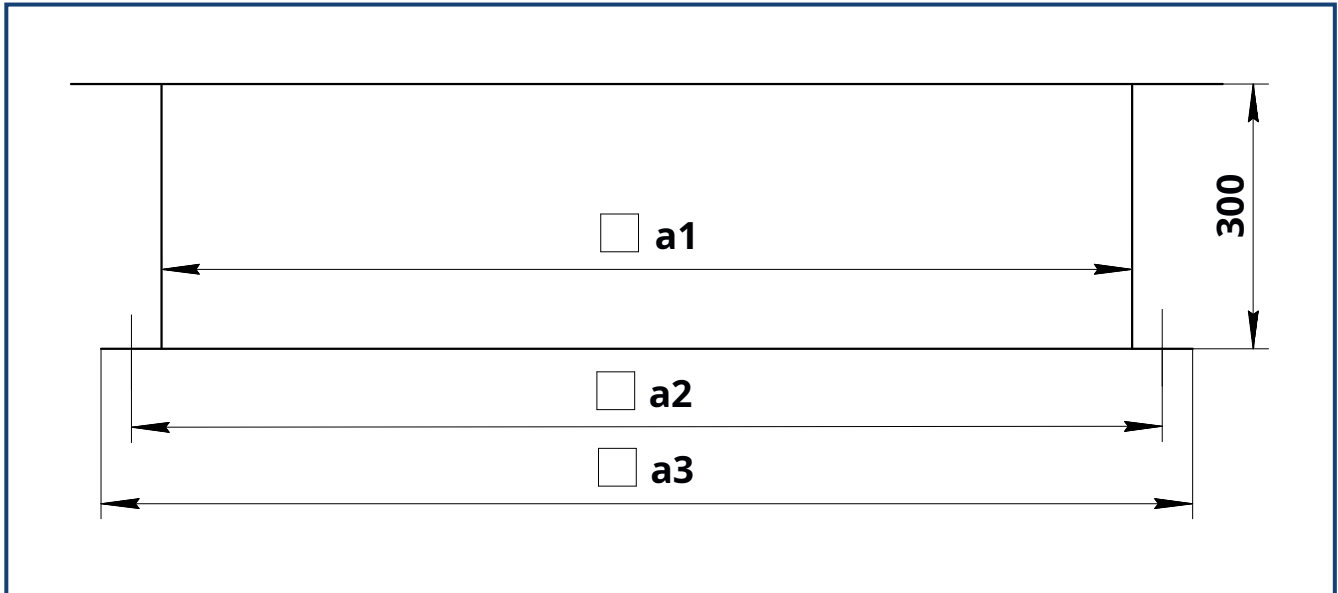
Order example

*Pipe for roof smoke exhaust fan **VKRN-V-11.2-DU-600-30/1000** with mounting cup **STM-U-140-KO-O***

PAK - 140 - O

Nozzle series: PAK ;		
Standard size of the STM mounting cup: 72; 92; 115; 140 ;156 ;		
Implementation: O - general industrial/smoke extraction; K - corrosion-resistant;		

Overall and connecting dimensions of pipes



Standard size fan	Glass assembly	Nipple	a1, mm	a2, mm	a3,mm	Weight, kg
5	STM-72	PAK-72	600	630	660	9
5.6			600	630	660	9
6.3	STM-92	PAK-92	800	830	860	12
7.1			800	830	860	12
8	STM-115	PAK-115	1050	1080	1100	19
9			1050	1080	1100	19
10	STM-140	PAK-140	1300	1330	1360	28
11.2			1300	1330	1360	28
12.5	STM-156	PAK-156	1400	1430	1460	42

UVE-810 Series Frequency Converter



Frequency converters **UVE-810** used to regulate the speed electric motors. They convert the voltage and frequency of the mains supply into a voltage of variable amplitude and frequency. In this way, the speed and torque of motors, machines and systems can be precisely adapted to the requirements of the respective application, and the energy efficiency of the motors or systems can be improved.

Frequency converter UVE-810-3x400V/240V

Type	Power, kW	Nominal current, A	Corps	Overall dimensions dimensions, mm	Braking resistor, Ohm/W
UVE-810-0005 T3	0.55	1.5	E1	80x135x138	150/80
UVE-810-0007 T3	0.75	2.0	E1	80x135x138	300/300
UVE-810-0015 T3	1.5	4.0	E1	80x135x138	150/300
UVE-810-0022 T3	2.2	6.5	E2	106x150x180	150/300
UVE-810-0030 T3	3.0	7.0	E2	106x150x180	90/1500
UVE-810-0040 T3	4.0	9.0	E2	106x150x180	90/1500
UVE-810-0055 T3	5.5	12.0	E2	106x150x180	90/1500
UVE-810-0075 T3	7.5	17.0	E4	138x152x235	90/1500
UVE-810-0110 T3	11.0	23.0	E5	156x170x265	50/1500
UVE-810-0150 T3	15.0	32.0	E5	156x170x265	30/3000
UVE-810-0185 T3	18.5	38.0	E6	205x196x340	30/3000
UVE-810-0220 T3	22.0	44.0	E6	205x196x340	30/3000
UVE-810-0300 T3	30.0	60.0	E6	205x196x340	30/3000
UVE-810-0370 T3	37.0	75.0	E7	265x235x435	30/3000
UVE-810-0450 T3	45.0	90.0	E7	265x235x435	15/4000
UVE-810-0550 T3	55.0	110.0	C41	315x234x555	15/5500
UVE-810-0750 T3	75.0	150,	C51	360x265x630	15/5500
UVE-810-0900 T3	90.0	180.0	C61	410x300x765	8/9000

Frequency converter UVE-810-1x230V/240V

Type	Power, kW	Nominal current, A	Corps	Overall dimensions dimensions, mm	Braking resistor, Ohm/W
UVE-810-0002-S-2	0.20	1.5	E1	80x135x138	150/300
UVE-810-0004-S-2	0.40	2.5	E1	80x135x138	150/300
UVE-810-0007-S-2	0.75	4.5	E1	80x135x138	150/300
UVE-810-0011-S-2	1.1	5.0	E1	80x135x138	80/500
UVE-810-0015-S-2	1.5	7.0	E1	80x135x138	80/500
UVE-810-0022-S-2	2.2	10.0	E2	106x150x180	80/500

Technical specifications

Power (L1/R, L2/S, L3/T)	
Supply voltage	S2: AC 1PH 220V~240V ($\pm 15\%$) T3: AC 3PH 380V~480V (-10%/+15%)
Supply voltage frequency	50/60 Hz ($\pm 5\%$)
Output data (U, V, W)	
Output voltage	3PH 0~100% supply voltage
Output frequency	0.0 - 650.0 Hz (frequency step 0.01 Hz)
Overload capacity	120% of rated current for 60 sec.
Digital inputs (DI)	
Multifunctional digital inputs	6 or 8 (depending on the case)
Digital input logic	NPN or PNP (set by polarity switch) digital inputs)
Voltage level	0 ~ 24V DC
Analog inputs (AI)	
Number of analog inputs	2
Operating mode	voltage or current
Voltage/current signal	0 ~ 10V DC / 0 ~ 20mA (scaled)
Digital outputs (DO)	
Multifunctional digital output	1 or 2 (depending on the case)
Voltage level	0 ~ 24V DC
Analog outputs (AO)	
Number of analog outputs	2
Operating mode	voltage or current
Voltage/current signal	0 ~ 10V DC / 0 ~ 20mA (scaled)
Relay outputs (TO)	
Number of relay outputs	1
Multifunction relay output	10A 125V AC / 3A - 250V AC / 30V DC
NO/NC	Switches
PID controller	Built-in
Communication protocol	Modbus RS485